

# *Precision***Power**<sup>®</sup>

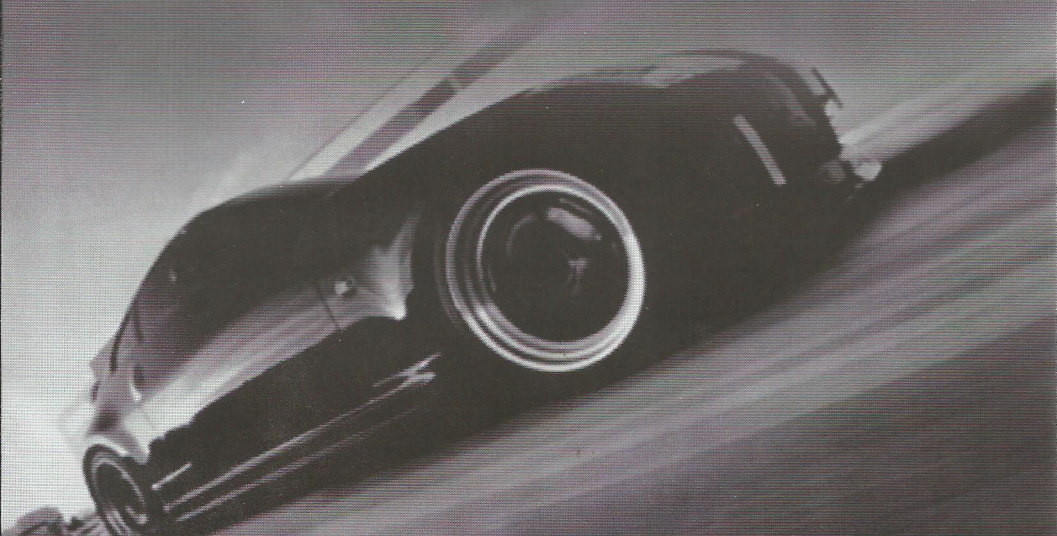
*Absolutely State of the Art Mobile Audio*<sup>™</sup>

## 2010 ART SERIES SUBWOOFERS

A.10

A.12

A.15





Thank you for choosing **PrecisionPower** woofers. Designed and engineered in the USA, this product combines innovative technology with the finest materials to consistently deliver *Absolutely State of the Art* performance, sound quality, reliability, and value. This **PrecisionPower** product reflects our commitment to offer you unparalleled performance and quality for years of dependable service and listening enjoyment.

**Features, Parameters, & Dimensions**

**Pressed Paper Cone**  
**Injection Molded Conical Dust Cap**  
**ABS Gasket**  
**4 Layer Voice Coil**  
**Stitched Tinsel Leads**

**Aluminum Voice Coil Former**  
**Conex Composite Spider**  
**Butyl Rubber Surround**  
**Vented Pole Piece**  
**Compression Terminals**

series wired	A.10	A.12	A.15
Fs (Hz)	33.87	26.14	21.61
Qms	4.19	5.673	5.545
Vas (ft³)	1.181	2.631	6.715
Cms (mm/N)	0.23	0.218	0.209
Mms (g)	96	169.6	259.1
Rms (kg/s)	4.876	4.912	6.347
Xmax (mm)	11.5	13.3	13.3
Xmech (mm)	17.25	19.95	19.95
Piston Diameter (in)	9.29	11.28	12.56
Sd (in²)	49.6	75.95	124
Qes	0.636	0.793	0.671
Re (Ω)	4	4	4
Z (Ω)	4	4	4
BL (Tm)	11.33	11.25	14.48
Rms Power (watts)	400	500	600
Qts	0.552	0.696	0.599
NO (%)	0.198	0.162	0.277
1w/1m SPL (dB)	84.97	84.12	86.44
2.8V SPL (dB)	88.12	87.71	89.58
Voice Coil Diameter (in)	2"	2.5"	2.5"
Impedance (Ω)	DVC 2Ω	DVC 2Ω	DVC 2Ω

## Enclosure Dimensions

Included in this manual are a number of different enclosure suggestions. These are by no means the only enclosures to use, but they provide a starting point to determine the correct enclosure for your needs many factors must be addressed (amount of power, vehicle, placement, crossovers, etc) Therefore, as always **PrecisionPower** recommends that your subwoofer be installed by an authorized **PrecisionPower** dealer.

## Enclosure Construction

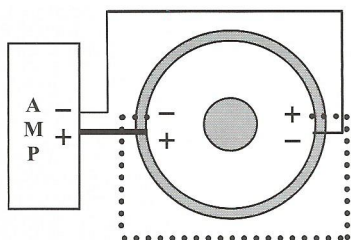
All enclosures should be made of .75" (3/4") material only. When possible, make the baffle 1.5" (1 1/2) thick and add .75" (3/4") to the depth of the enclosure to compensate. All volumes INCLUDE vent/port and subwoofer displacements. DO NOT change the volume unless you plan on adding a substantial amount of bracing. For added performance, applying a coat of fiberglass resin to the interior walls will greatly improve sealing the enclosure. Adding a thin layer of poly-fill will improve response by smoothing out reflections within the enclosure.

## Enclosure Recommendations

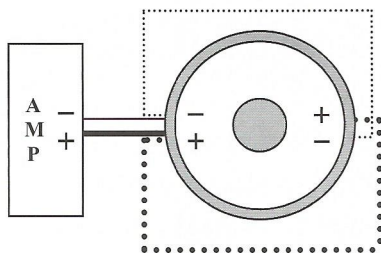
A.10 Sealed			
Vol. (ft. <sup>3</sup> )	Dimensions (H x L x D)	QTC	-3dB (Hz)
0.50	11x14x9	0.965	50.8
0.75	11x14x12.5	0.847	47.6
1.00	11x14x16.25	0.778	46.3

A.12 Sealed			
Vol. (ft. <sup>3</sup> )	Dimensions (H x L x D)	QTC	-3dB (Hz)
1.00	13x14.5x13	1.252	37.5
1.50	13x21.25x13	1.084	33.6
2.00	13x27.75x13	0.996	31.7

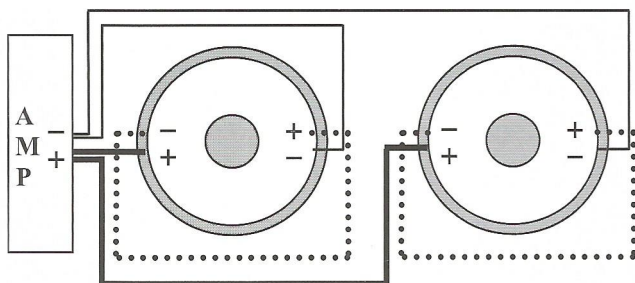
A.15 Sealed			
Vol. (ft. <sup>3</sup> )	Dimensions (H x L x D)	QTC	-3dB (Hz)
2.00	18x17.5x15	1.219	34.9
3.00	18x25x15	1.035	31.1
4.00	18x33x15	0.933	29.4



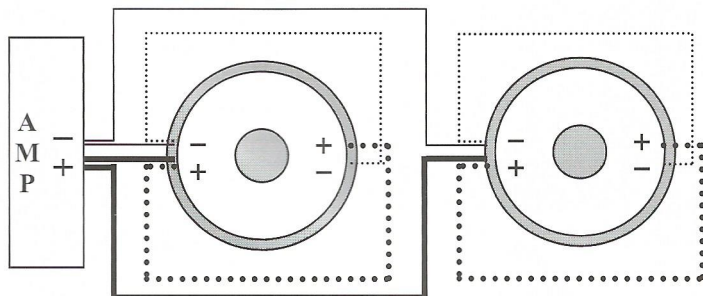
**1 Art Subwoofer Wired to  $4\Omega$**



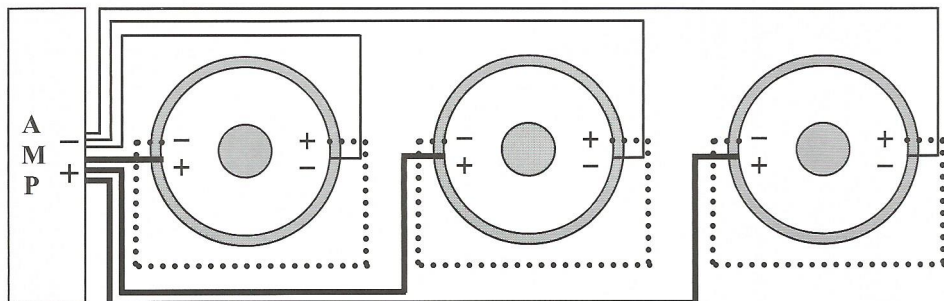
**1 Art Subwoofer Wired to  $1\Omega$**



**2 Art Subwoofers Wired to  $2\Omega$**



**2 Art Subwoofers Wired to  $.5\Omega$**



**3 Art Subwoofers Wired to  $1.33\Omega$**