

Kole Audio MFW Woofers

Congratulations on your purchase of one of the finest woofers available for your vehicle today.

If you are an enthusiast that plays your system loud and hard but has limited space for a woofer box, the MFW woofers will take you to the limit. Our small sealed enclosure, high excursion design will move enough air to part your hair. Let your woofers do all the talking to let everyone know you are a "Serious about your sound".

Please take a few moments to fill out the warranty card and review this manual before installing this woofer for proper connections and box sizes.

Design Features

Cast aluminum, flat basket		
Black wrinkle finish w/ Diamond cut		
Titanium/Aluminum cone		
XL Chrome front & back plate		
Large foam rubber surround		
Black poly/cotton spider		
Woven flat tinsel lead		
Chrome push terminals		
Single 4-ohm voice coil		
SPL:	10"-89 dB	12"-91dB
Magnet structures:	10"-200 oz	12"-230 oz
AOH voice coil:	10"-2.5"	12"-2.5"
Power (RMS watts):	10"-400	12"-500

Building the Enclosure

- Determine the dimensions of your enclosure.
- Be certain the box dimensions that you have designed will fit in the location you have chosen in your vehicle. Sometimes making a cardboard box with the same outside dimensions is helpful.
- It is recommended to use $\frac{3}{4}$ inch thick MDF (medium density fiberboard) for your box.
- Use a "T" square to verify precise right angle cuts before you assemble the box.
- Use high quality wood glue and screws to assemble the box to guarantee an airtight box that will not come apart due to excess vibration and pressure.
- It is recommended for sealed enclosures to stuff the interior of the box about 50-75% fiberglass insulation or Dacron fiberfill for increased sound damping and woofer performance.
- For ported enclosures, it is recommended to staple 1" thick fiberglass insulation to the interior walls of your box.
- Use slide on connectors for spade style connectors or bare wire for push and screw terminals. Do not solder the wires to the factory connectors as this may cause damage to the voice coil or tinsel lead and may void your warranty.

Recommended box sizes

Model	Sealed Box Size	Ported Box Size	Tune Freq.	# of Ports	Port (dia x length)
MFW-10	1.0 cubic feet	N/A	N/A	N/A	N/A
MFW-12	1.2 cubic feet	N/A	N/A	N/A	N/A

SPECIFICATIONS

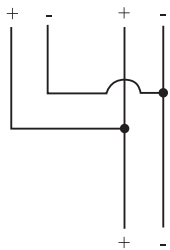
MODEL	MFW-10	MFW-12
Fs(free air resonance)	30 Hz	29 Hz
SPL(efficiency, 1W/1M)	89 dB	91 dB
Nominal impedance	4 ohm	4 ohm
Qts(total speaker"Q")	0.5288	0.5173
Qes(electrical"Q")	0.5648	0.5805
Qms(mechanical"Q")	8.2866	4.7501
Vas(equivalent compliance)	30 L	40 L
Mounting Depth	91.5 mm	100 mm
Mounting Hole	230 mm	284 mm

Recommended wiring

The following page will give you a few different options to match the impedance of the woofers to the impedance capability of the amplifier. Please look and follow the diagrams closely to insure maximum woofer performance.



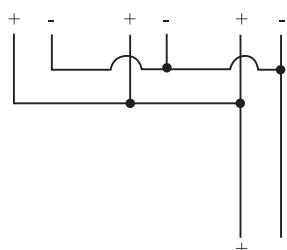
4-ohm 4-ohm



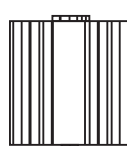
2-ohm



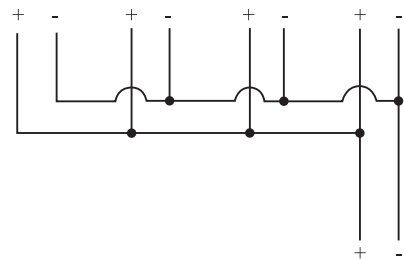
4-ohm 4-ohm 4-ohm



1.33-ohm



4-ohm 4-ohm 4-ohm 4-ohm



1-ohm

